



Old Mill Park

19 Fall – Old Mill Park - Replacements

-  Remove/Replace Trees
-  Missing Trees
-  Existing Planted Trees

ARS Acer rubrum 'Red Sunset' – Red Sunset Maple (1)

BND Betula nigra 'Dura Heat' – Dura Heat River Birch (5)

LTU Liriodendron tulipifera – Tulip Poplar (4)

PY Prunus yedoensis 'Yoshino' – Yoshino Cherry (1)

QB Quercus bicolor – Swamp White Oak (12)

QP Quercus phellos – Willow Oak (1)

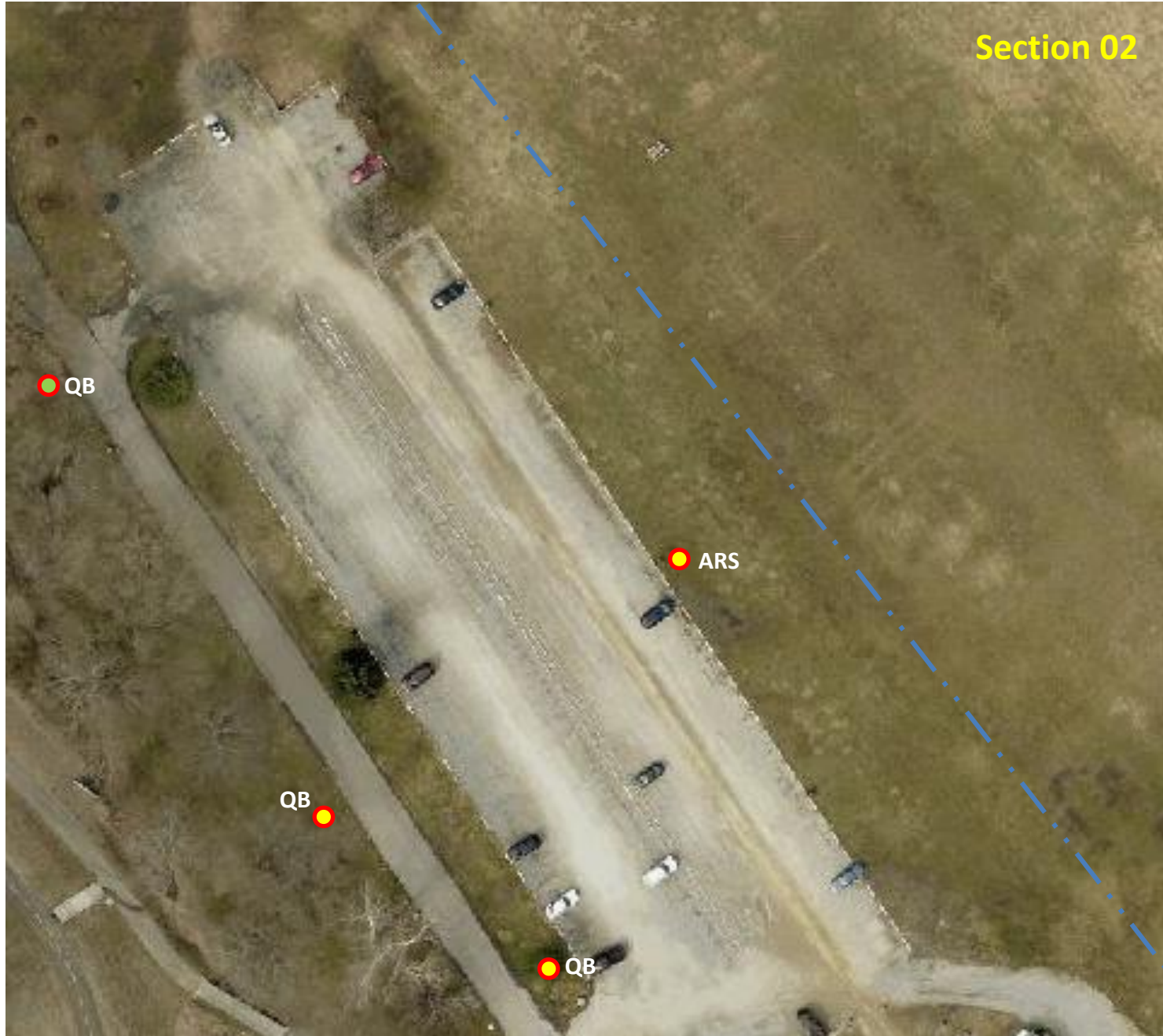
Total: 24

19 Fall – Old Mill Park - Replacements



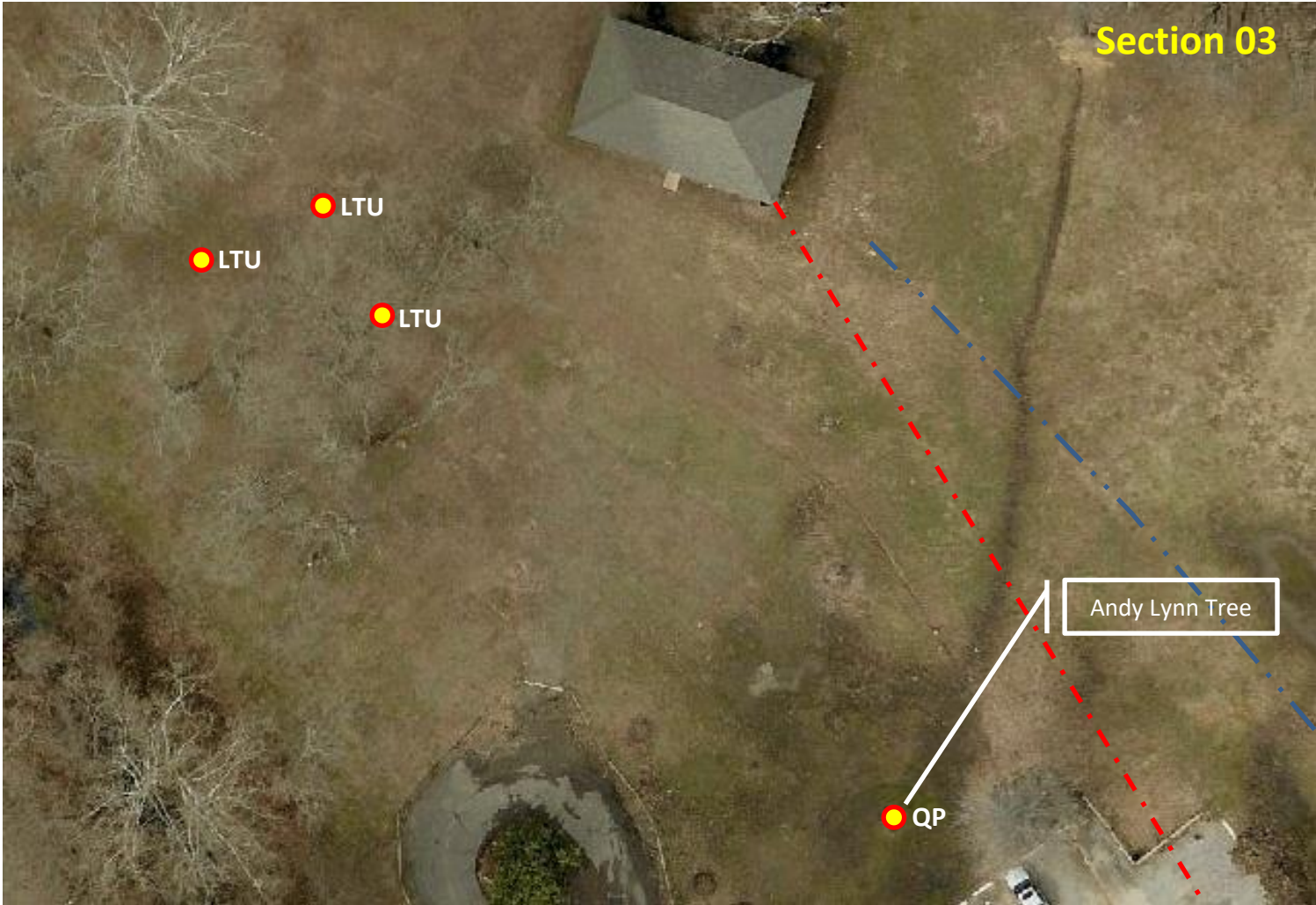
19 Fall – Old Mill Park - Replacements

Section 02



19 Fall – Old Mill Park - Replacements

- Remove/Replace Trees
- Missing Trees
- Existing Planted Trees



19 Fall – Old Mill Park - Replacements

- Remove/Replace Trees
- Missing Trees
- Existing Planted Trees

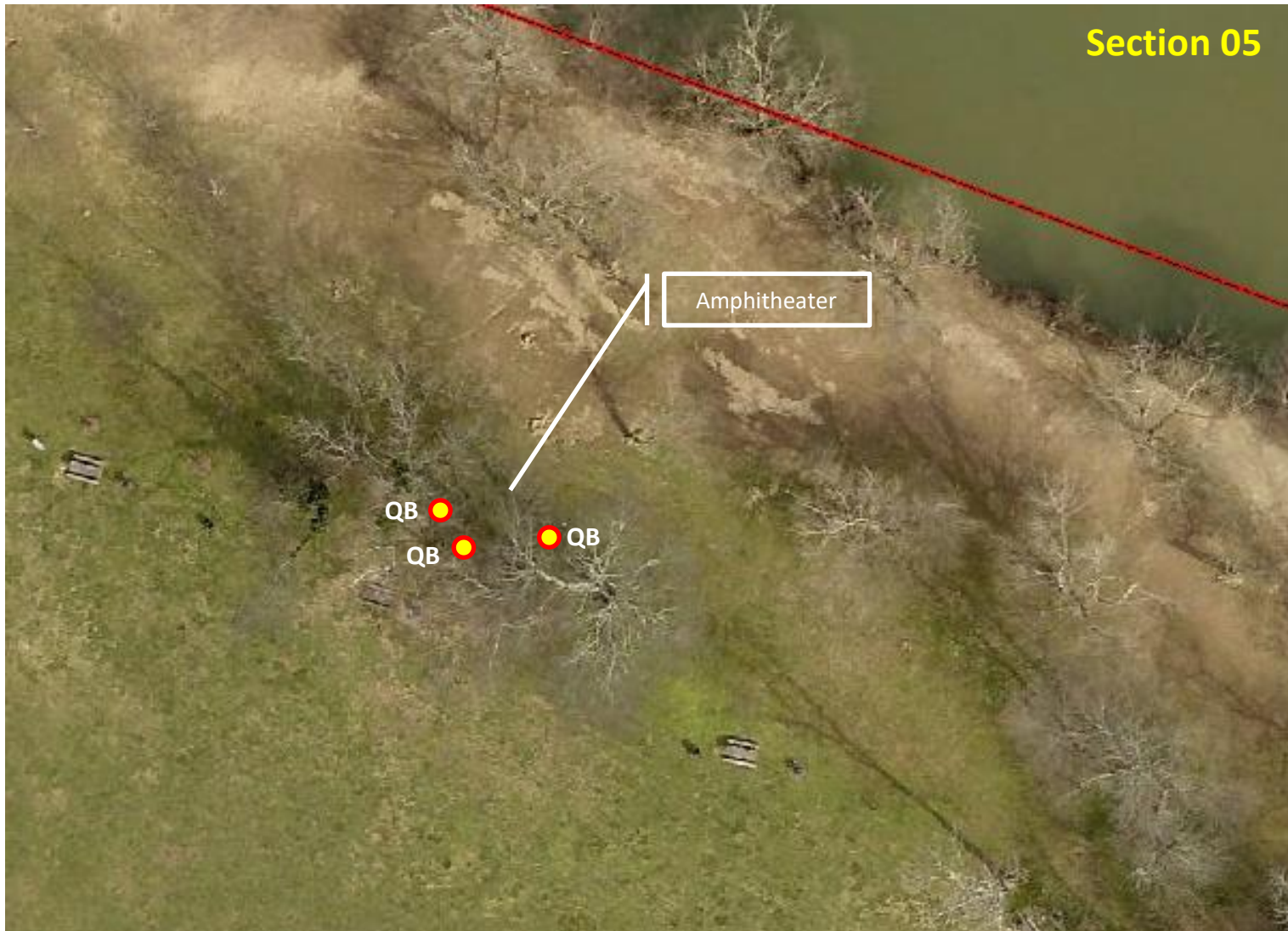


19 Fall – Old Mill Park - Replacements

9/16/2019 17:05

- Remove/Replace Trees
- Missing Trees
- Existing Planted Trees

Section 05



19 Fall – Old Mill Park - Replacements

- Remove/Replace Trees
- Missing Trees
- Existing Planted Trees