

School Enrollment Projection Comparison
April 2 2019

Weldon Cooper Center - Middle Projection
2017 Moseley Architects Analysis

Grade	K		1		2		3		4		5		6		7		8		9		10		11		12		Total	
	WCC	MA	WCC	MA	WCC	MA	WCC	MA	WCC	MA	WCC	MA	WCC	MA	WCC	MA	WCC	MA	WCC	MA	WCC	MA	WCC	MA	WCC	MA	WCC	MA
SY 19	340	284	302	293	274	303	266	307	273	276	296	276	278	313	243	305	242	236	286	262	231	248	254	272	240	272	3525	3647
SY 20	320	279	341	288	290	298	267	308	272	312	267	280	289	280	291	318	245	310	291	239	256	267	222	252	241	276	3592	3707
SY 21	308	275	324	284	325	293	283	303	273	313	267	317	260	285	303	285	292	323	298	315	259	243	245	271	207	256	3644	3763
SY 22	303	270	313	279	306	288	321	298	289	308	268	318	258	322	274	290	299	290	351	329	265	320	249	247	233	275	3729	3834
SY 23	316	266	306	275	298	284	300	293	328	303	283	313	260	323	271	327	274	294	361	294	313	334	254	325	235	251	3799	3882
SY 24	326	262	320	271	291	279	292	289	307	298	321	308	275	318	273	328	270	333	331	299	321	299	300	339	239	330	3866	3953
SY 25	331	258	330	266	304	275	286	284	298	293	301	303	311	313	289	323	272	334	326	338	295	304	308	304	283	345	3934	3940
SY 26	334	254	335	262	314	271	298	279	292	289	292	296	292	308	327	318	288	328	328	339	290	344	289	309	290	309	3963	3908
SY 27	340	250	338	258	318	266	308	275	305	284	286	293	283	303	307	313	326	323	348	334	292	345	278	349	267	314	3996	3907
SY 28	346	246	344	254	321	262	312	271	315	279	299	289	277	298	297	308	306	318	333	328	310	339	280	350	262	355	4062	3897
SY 29	353	242	350	250	327	258	315	266	319	275	309	284	290	293	291	303	296	313	369	323	350	334	298	345	264	356	4131	3842

*There are slight variances (+/- 1 to 2) in certain years between totals here for Moseley 2017 and March 20,2019 presentation
*Sources: April 1 2019 Weldon Cooper Center Projection and March 20, 2019 Moseley presentation

**School Enrollment Projection Comparison
April 2 2019**

Weldon Cooper Center - Middle Projection
2017 Moseley Architects Analysis

Grade	K		1		2		3	
	WCC	MA	WCC	MA	WCC	MA	WCC	MA
SY 19	340	284	302	293	274	303	266	307
SY 20	320	279	341	288	290	298	267	308
SY 21	308	275	324	284	325	293	283	303
SY 22	303	270	313	279	306	288	321	298
SY 23	316	266	306	275	298	284	300	293
SY 24	326	262	320	271	291	279	292	289
SY 25	331	258	330	266	304	275	286	284
SY 26	334	254	335	262	314	271	298	279
SY 27	340	250	338	258	318	266	308	275
SY 28	346	246	344	254	321	262	312	271
SY 29	353	242	350	250	327	258	315	266

*There are slight variances (+/- 1 to 2) in certain years between totals here for Moseley 2017 and the March 20, 2019 presentation

Grade	4		5		6	
	WCC	MA	WCC	MA	WCC	MA
SY 19	273	276	296	276	278	313
SY 20	272	312	267	280	289	280
SY 21	273	313	267	317	260	285
SY 22	289	308	268	318	258	322
SY 23	328	303	283	313	260	323
SY 24	307	298	321	308	275	318
SY 25	298	293	301	303	311	313
SY 26	292	289	292	298	292	308
SY 27	305	284	286	293	283	303
SY 28	315	279	299	289	277	298
SY 29	319	275	309	284	290	293

Grade	7		8		9	
	WCC	MA	WCC	MA	WCC	MA
SY 19	243	305	242	236	286	262
SY 20	291	318	245	310	291	239
SY 21	303	285	292	323	298	315
SY 22	274	290	299	290	351	329
SY 23	271	327	274	294	361	294
SY 24	273	328	270	333	331	299
SY 25	289	323	272	334	326	338
SY 26	327	318	288	328	328	339
SY 27	307	313	326	323	348	334
SY 28	297	308	306	318	393	328
SY 29	291	303	296	313	369	323

Grade	10		11		12		Total	
	WCC	MA	WCC	MA	WCC	MA	WCC	MA
SY 19	231	248	254	272	240	272	3525	3647
SY 20	256	267	222	252	241	276	3592	3707
SY 21	259	243	245	271	207	256	3644	3763
SY 22	265	320	249	247	233	275	3729	3834
SY 23	313	334	254	325	235	251	3799	3882
SY 24	321	299	300	339	239	330	3866	3953
SY 25	295	304	308	304	283	345	3934	3940
SY 26	290	344	283	309	290	309	3963	3908
SY 27	292	345	278	349	267	314	3996	3907
SY 28	310	339	280	350	262	355	4062	3897
SY 29	350	334	298	345	264	356	4131	3842

Hugh Mercer Elementary School

Grades K - 2

	WCC	MA	Sept 18
SY 19	916	880	921
SY 20	951	865	
SY 21	957	852	
SY 22	922	837	
SY 23	920	825	
SY 24	937	812	
SY 25	965	799	
SY 26	983	787	
SY 27	996	774	
SY 28	1011	762	
SY 29	1030	750	

Lafayette Upper Elementary School

Grades 3 - 5

	WCC	MA	Sept 18
SY 19	835	859	835
SY 20	806	900	
SY 21	823	933	
SY 22	878	924	
SY 23	911	909	
SY 24	920	895	
SY 25	885	880	
SY 26	882	866	
SY 27	899	852	
SY 28	926	839	
SY 29	943	825	

Walker-Grant Middle School

Grades 6 - 8

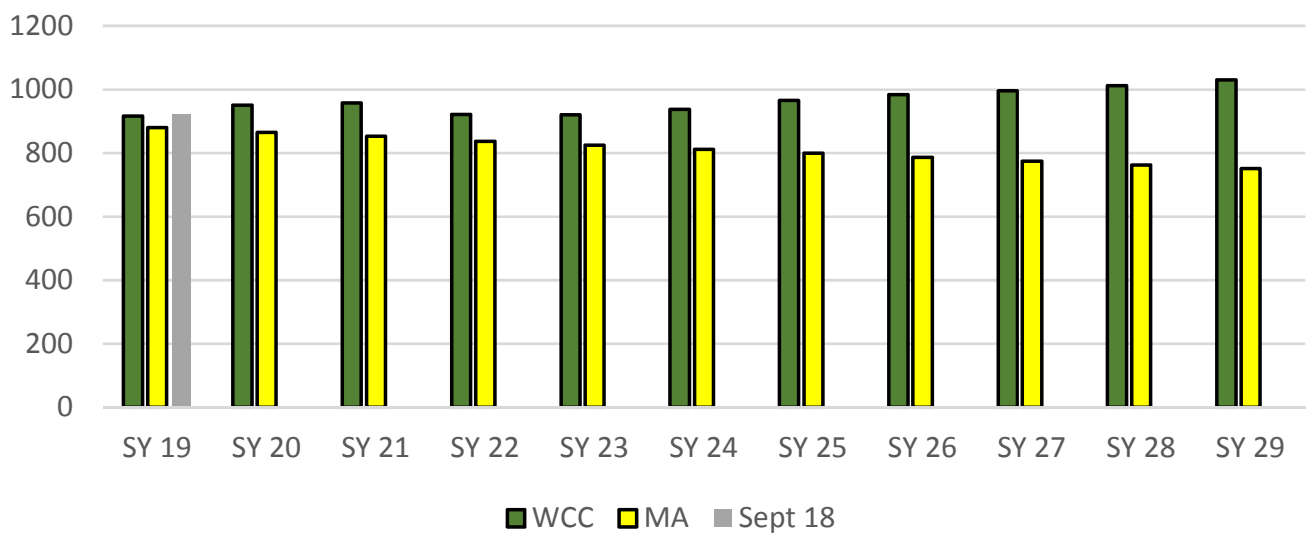
	WCC	MA	Sept 18
SY 19	763	854	764
SY 20	825	908	
SY 21	855	893	
SY 22	831	902	
SY 23	805	944	
SY 24	818	979	
SY 25	872	970	
SY 26	907	954	
SY 27	916	939	
SY 28	880	924	
SY 29	877	909	

James Monroe High School

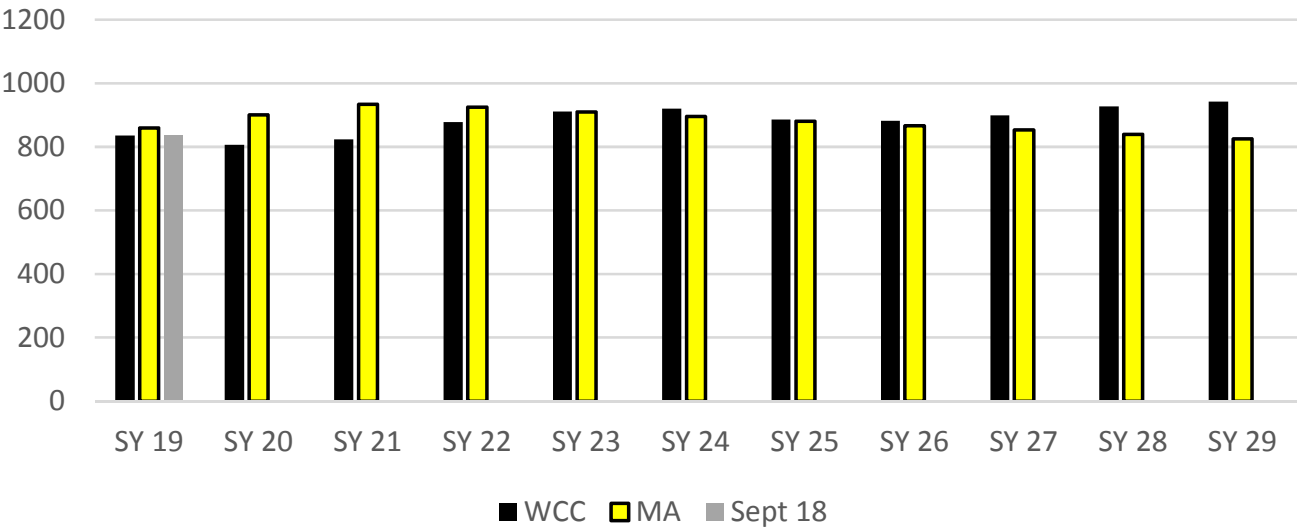
Grades 9 - 12

	WCC	MA	Sept 18
SY 19	1011	1054	1013
SY 20	1010	1034	
SY 21	1009	1085	
SY 22	1098	1171	
SY 23	1163	1204	
SY 24	1191	1267	
SY 25	1212	1291	
SY 26	1191	1301	
SY 27	1185	1342	
SY 28	1245	1372	
SY 29	1281	1358	

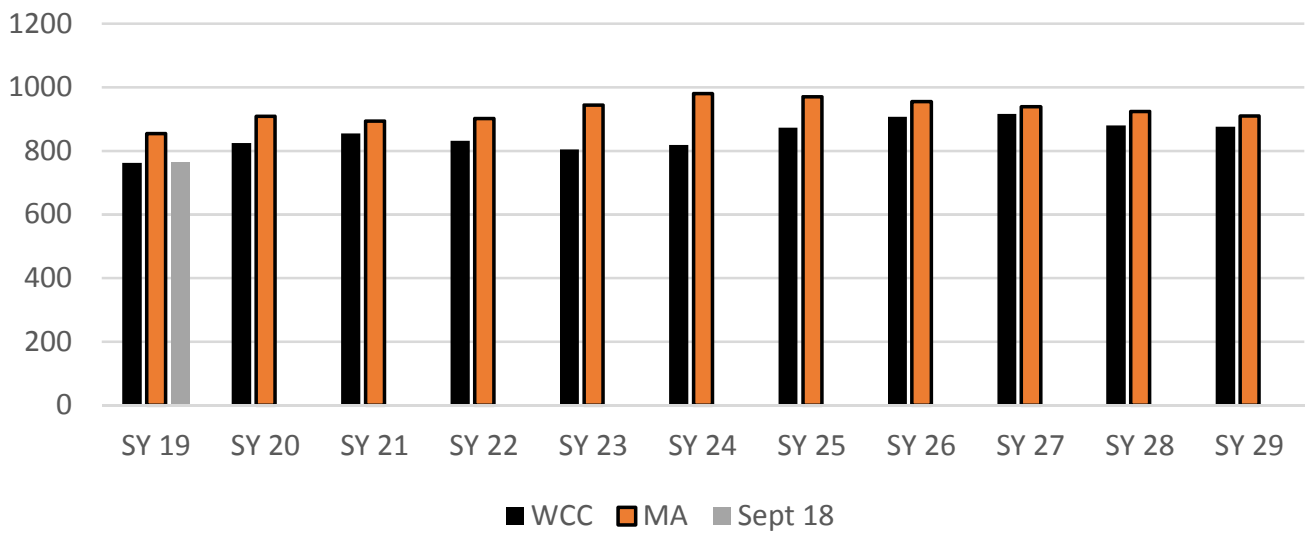
Hugh Mercer Elementary School Grades K-2



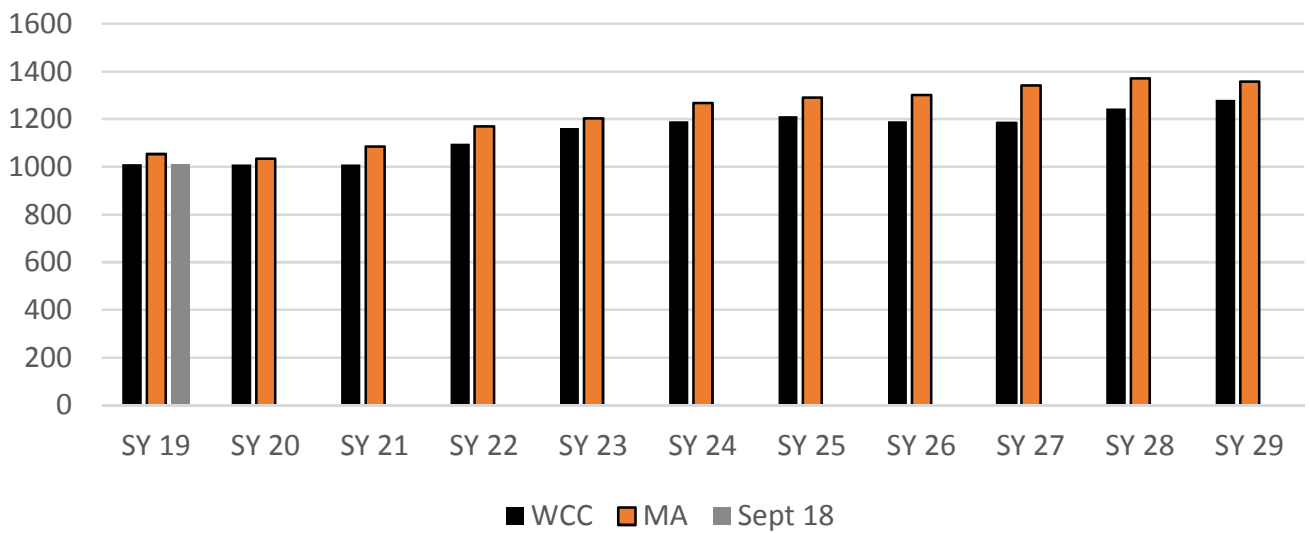
Lafayette Upper Elementary School Grades 3-5



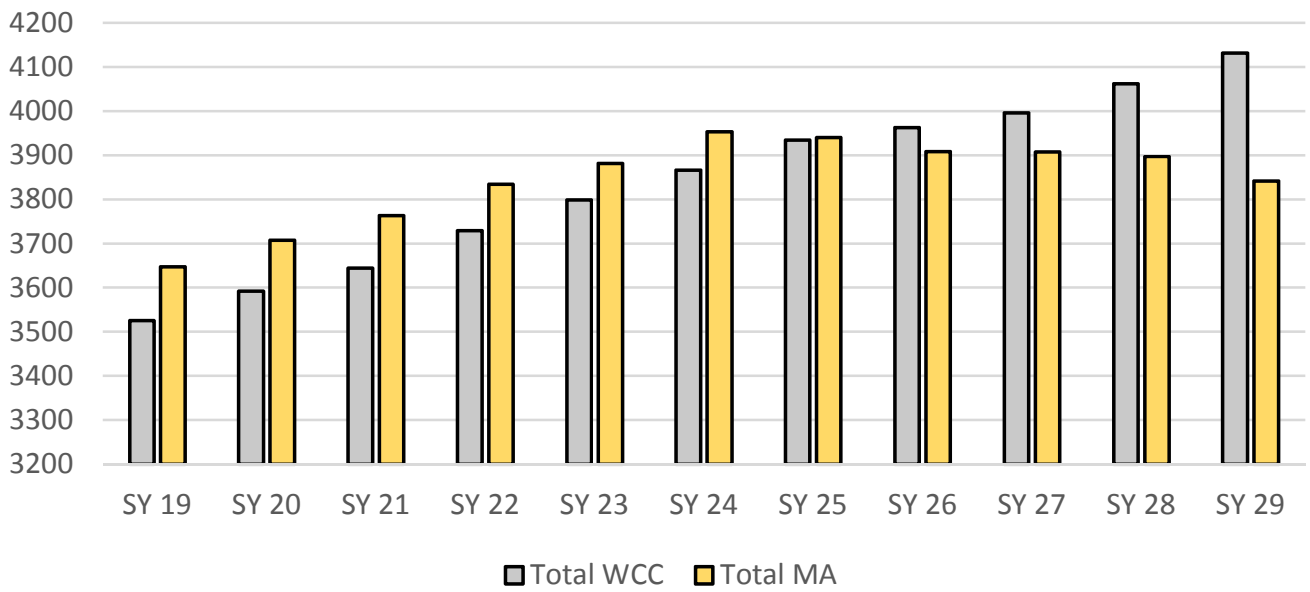
Walker-Grant Middle School Grades 6-8



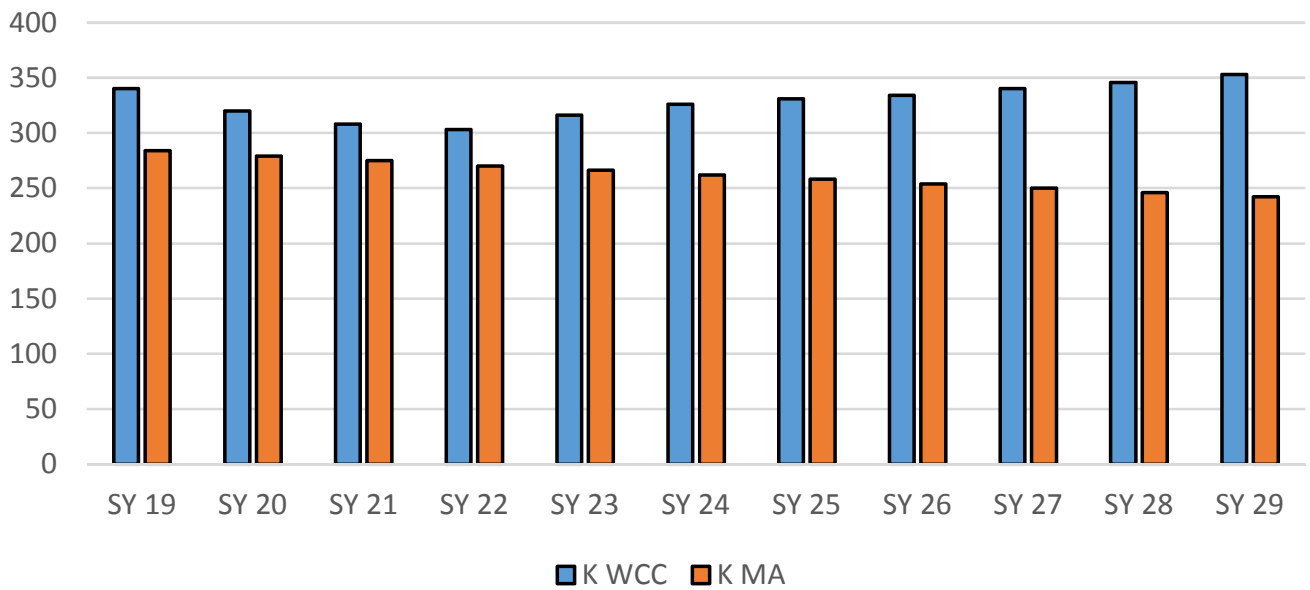
James Monroe High School Grades 9-12



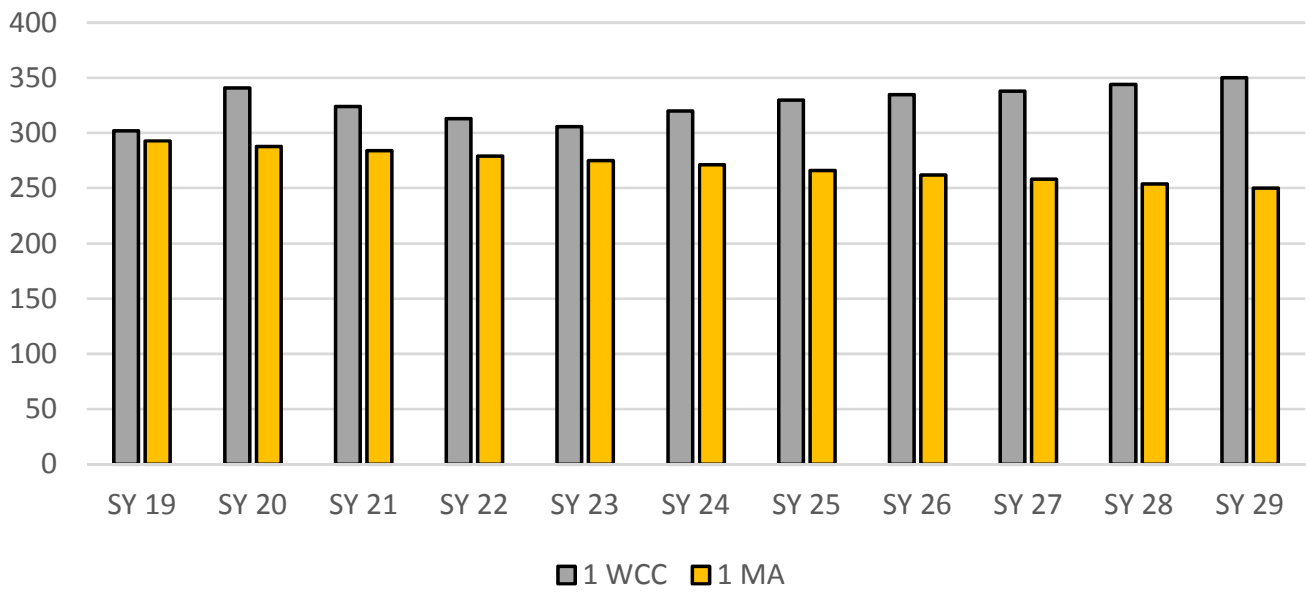
Total System



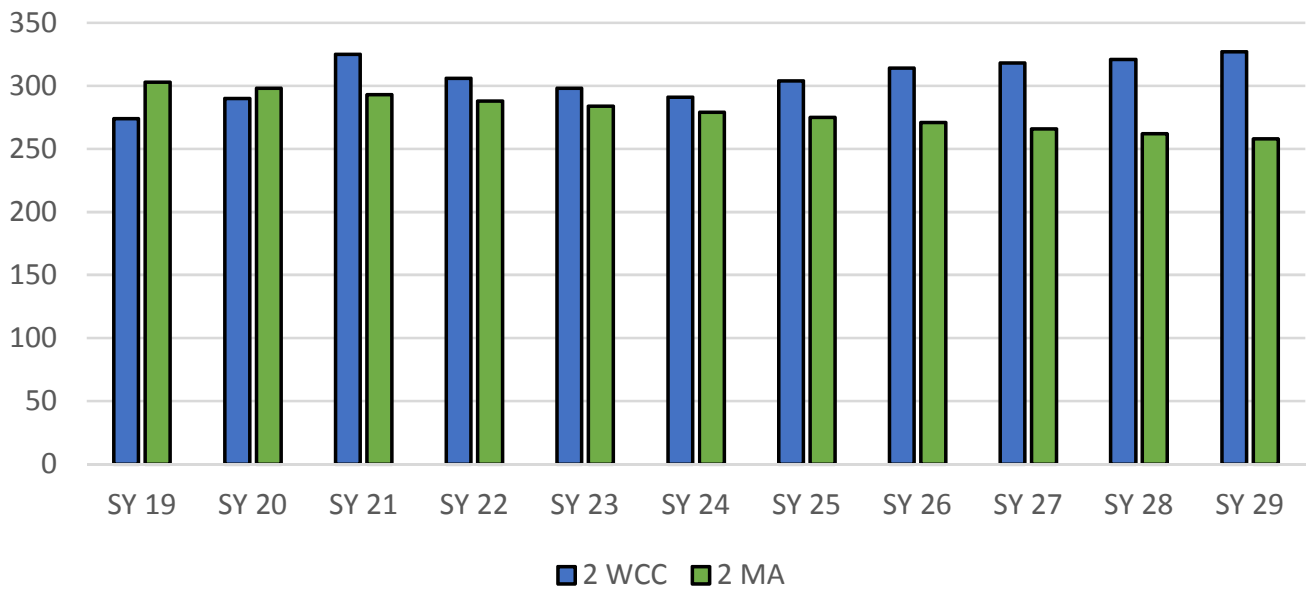
Kindergarten



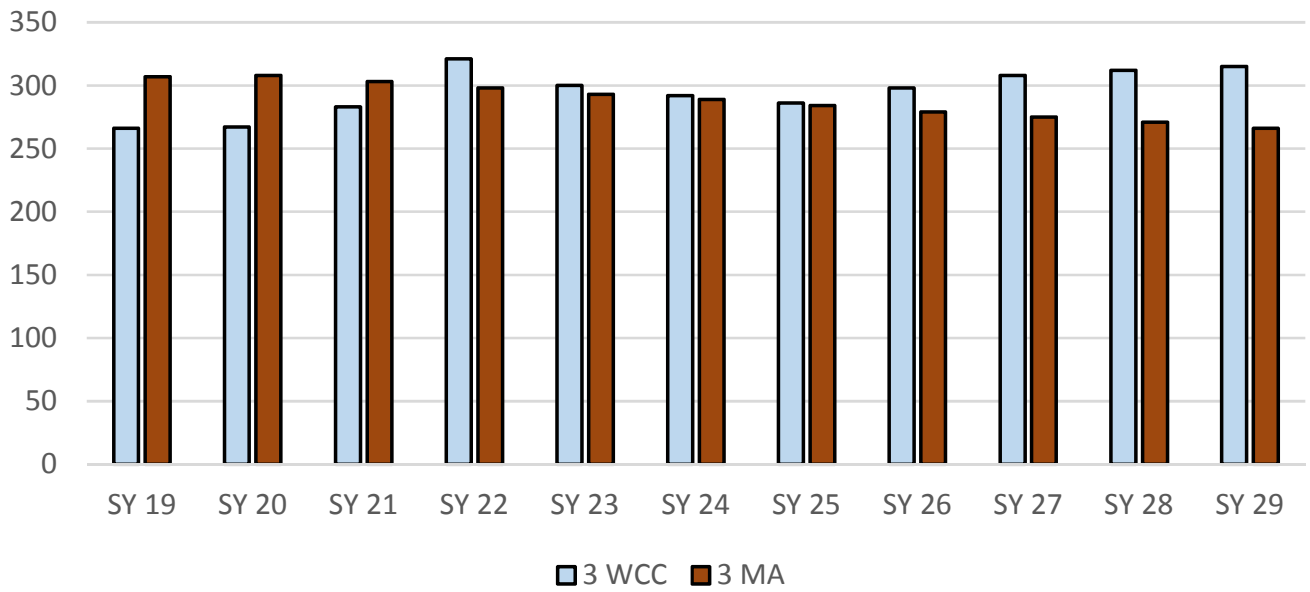
1st Grade



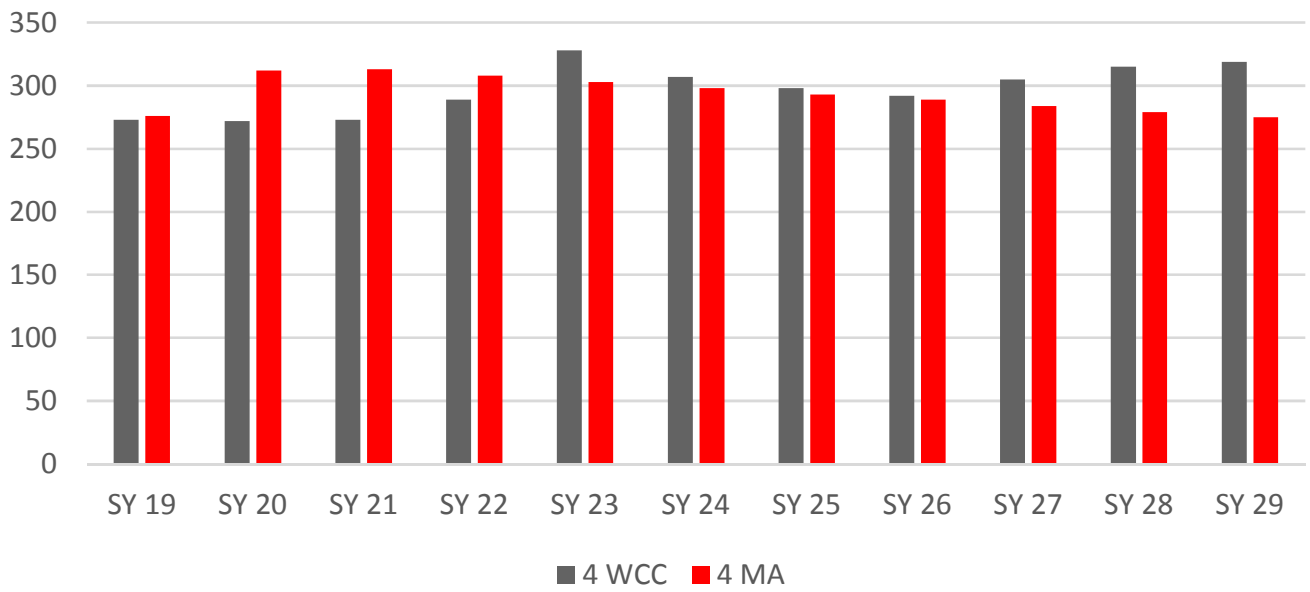
2nd Grade



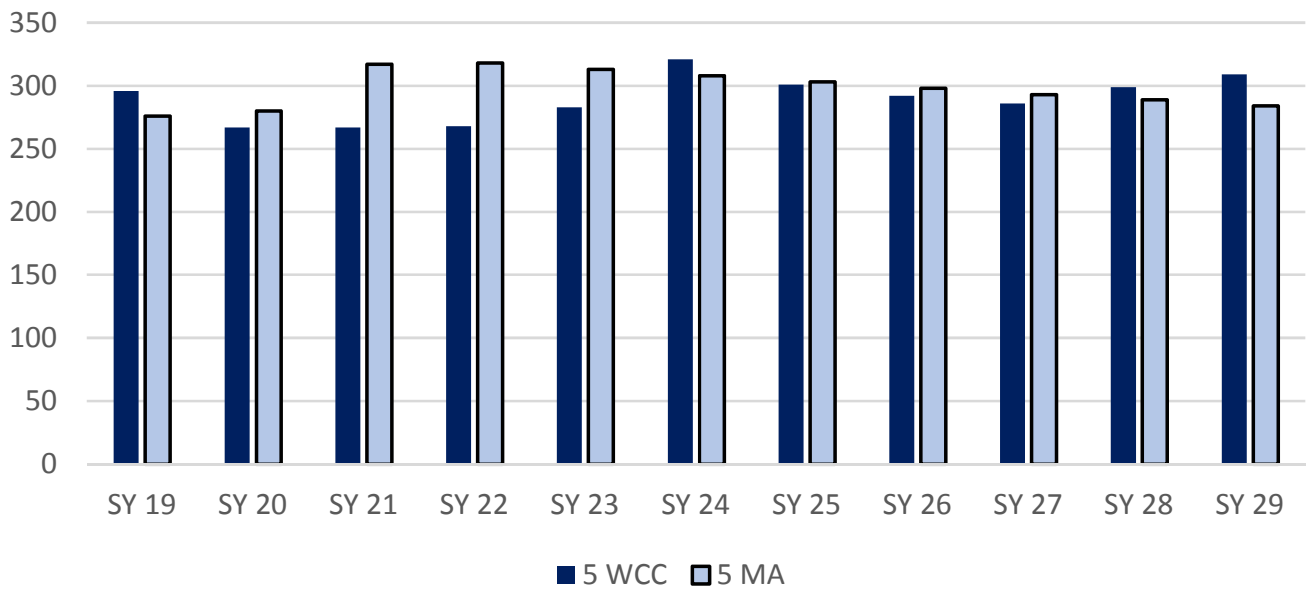
3rd Grade



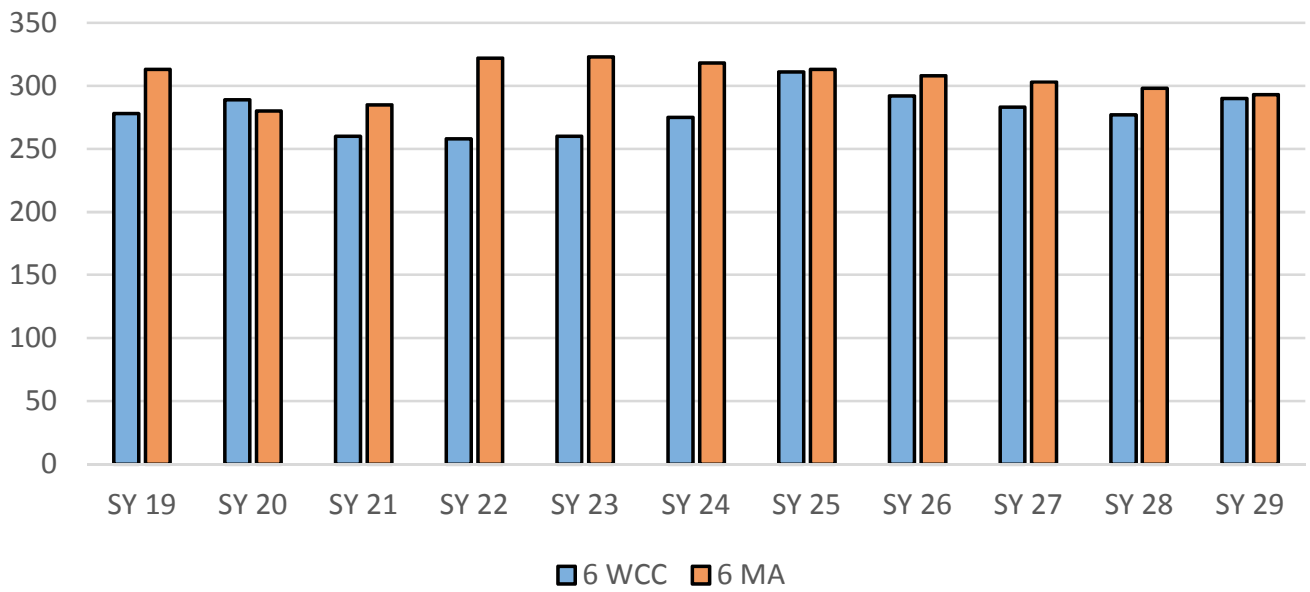
4th Grade



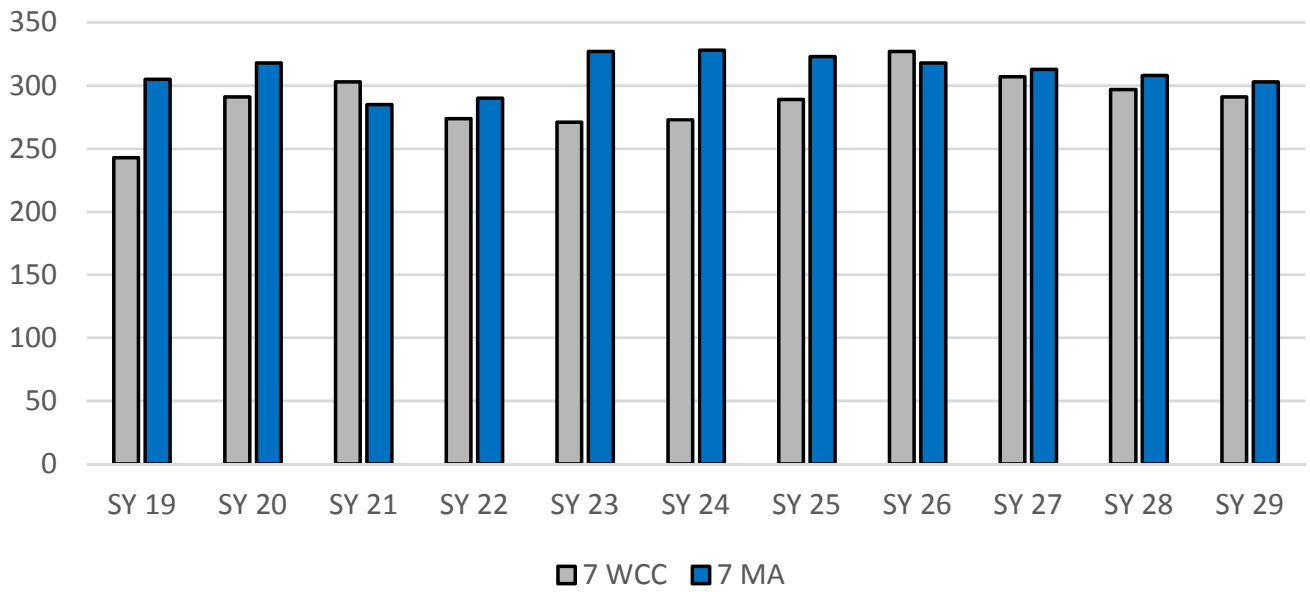
5th Grade



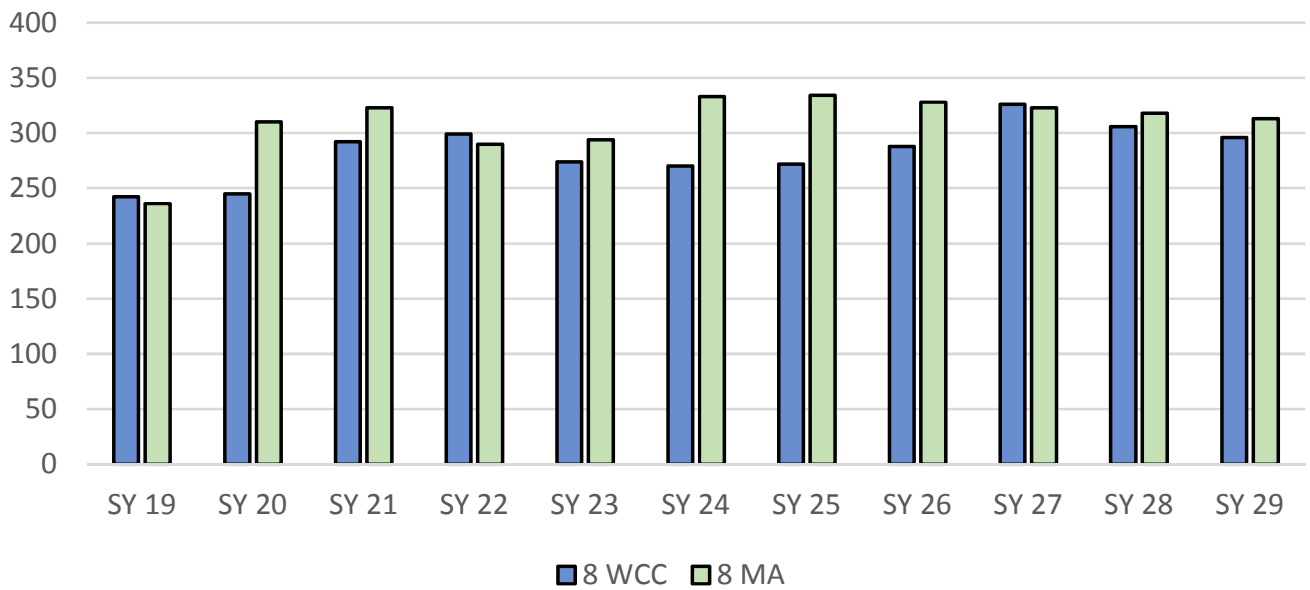
6th Grade



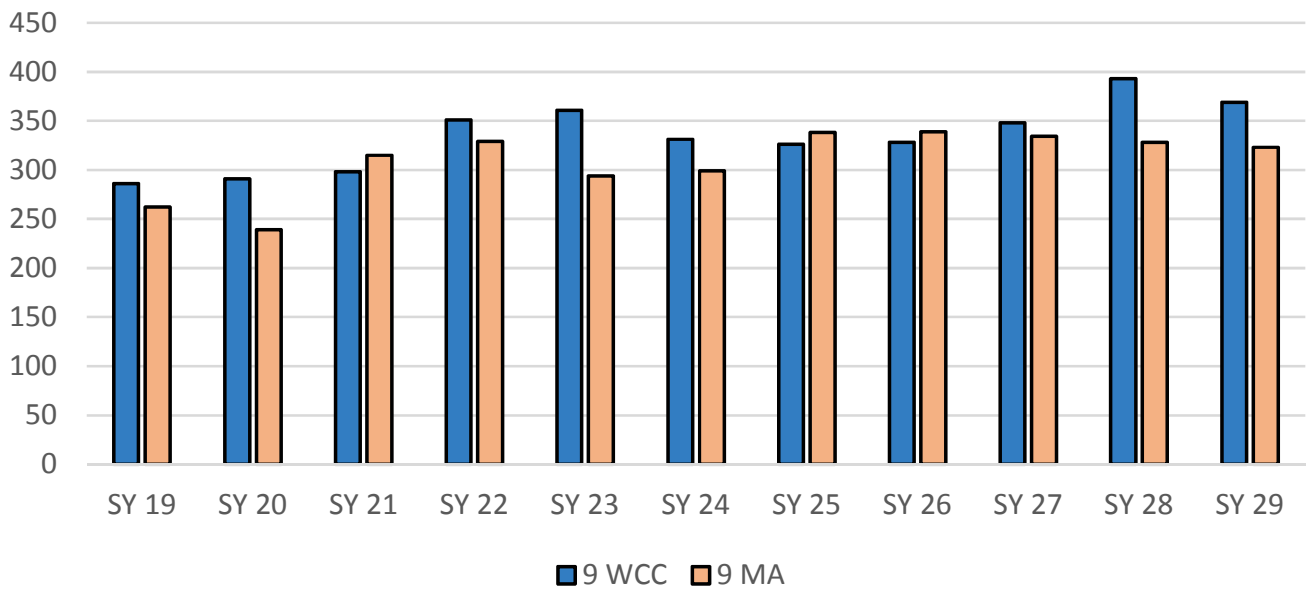
7th Grade



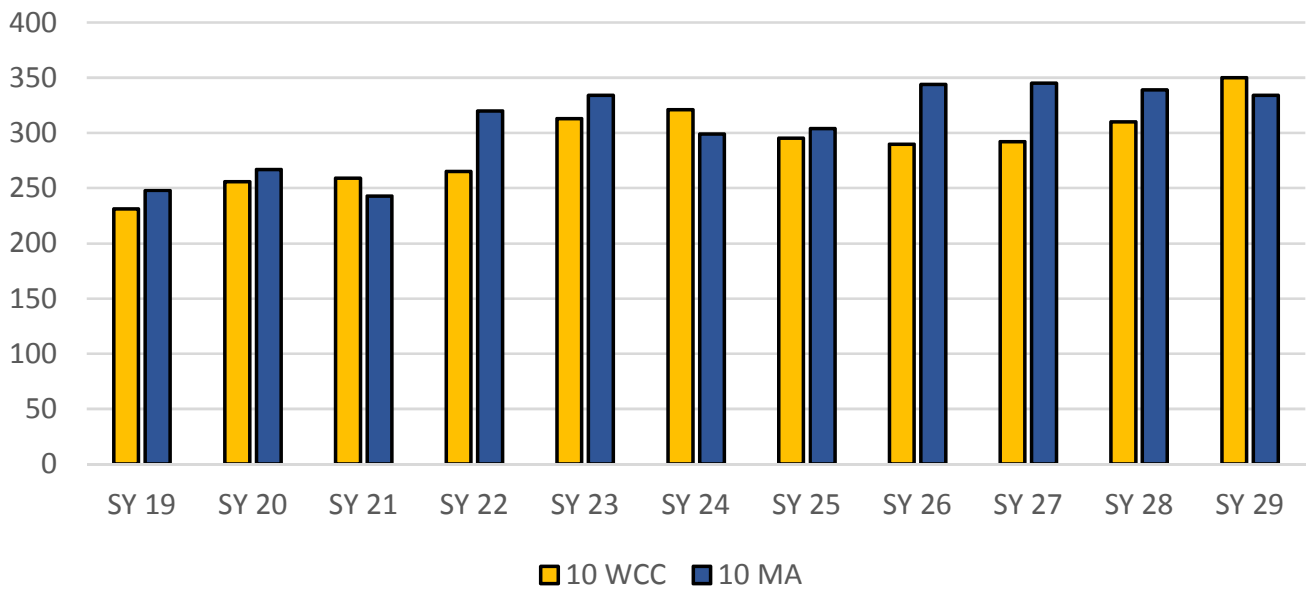
8th Grade



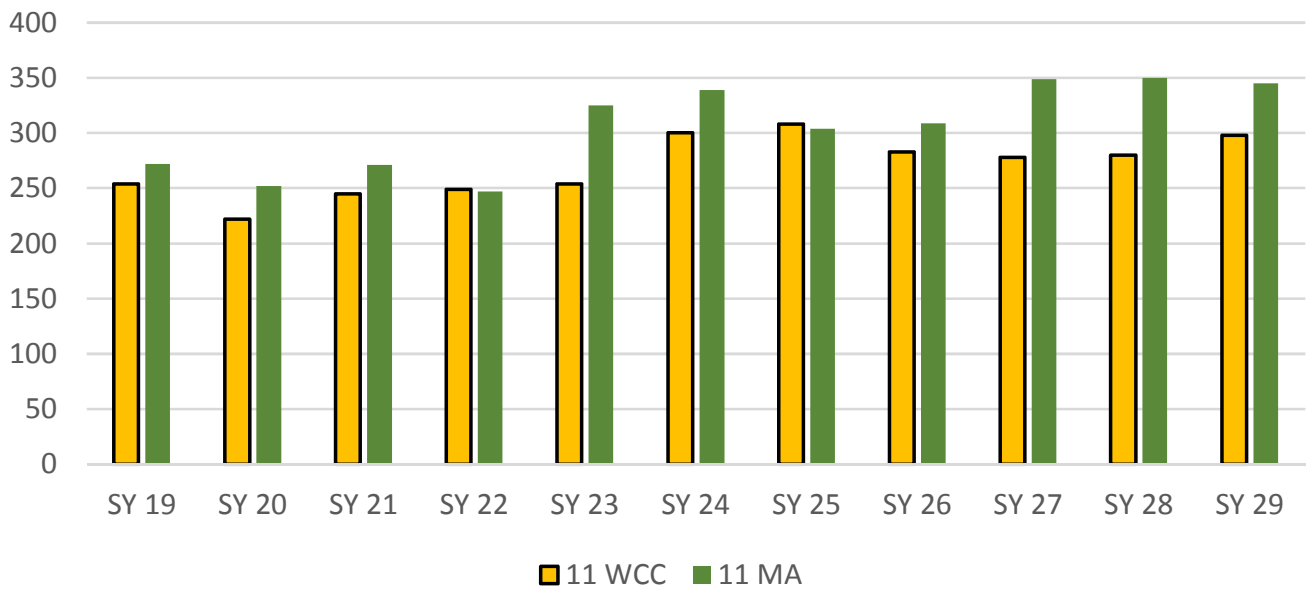
9th Grade



10th Grade



11th Grade



12th Grade

